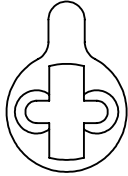


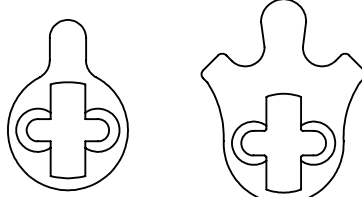
**CYLINDER & CAM REQUIREMENTS**

Mortise Cylinder: 1-1/8" to 1-1/4" in depth

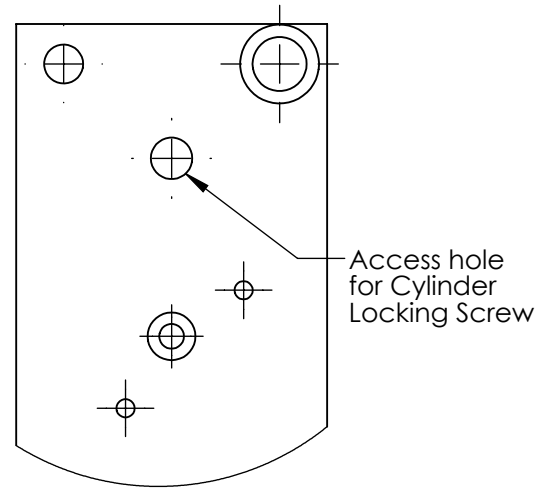
**Classroom function (M3)**  
Adams-Rite- type short straight cam



**Storeroom Function (M1)**  
use either Yale-type straight cam  
or Russwin-type cloverleaf cam



\* allows one-hand operation of lever for single opening



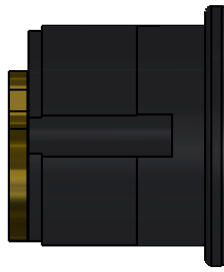
**CYLINDER PREPARATION**



Cylinder Collar



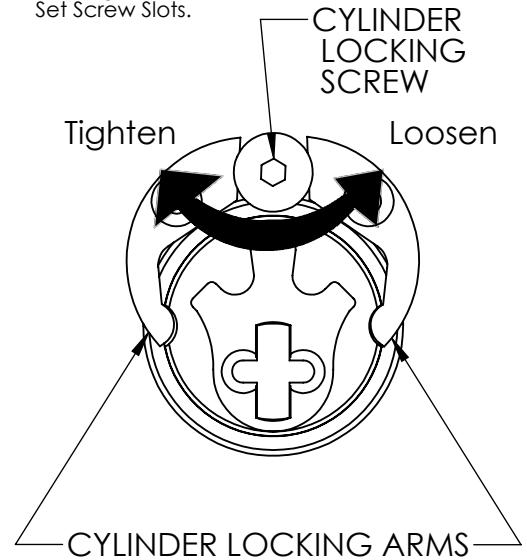
Spring



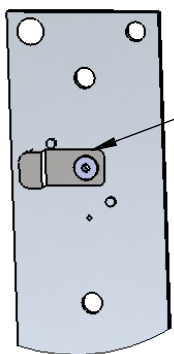
Mortise Cylinder

Insert mortise cylinder into spring and then cylinder collar. Screw the mortise cylinder into the lever.

Rotate Cylinder Locking Screw to loosen or tighten Cylinder Locking Arms around Cylinder Set Screw Slots.

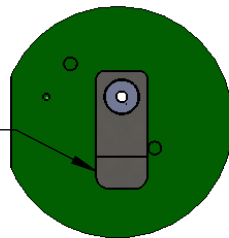


**TRIM PREPARATION for CLASSROOM FUNCTION (M3) ONLY**



TRIM IN LOCKED POSITION

TRIM IN UNLOCKED POSITION (DOGGED)



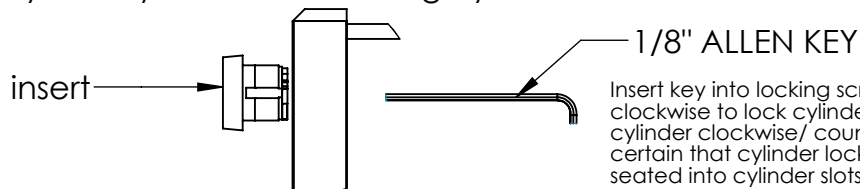
Cylinder assembly must be installed with trim in unlocked (dogged) position. Tab down as shown at left.

**INTERNAL VIEW OF QUICKSWITCH ASSEMBLY**

**NOTE:**  
Cylinder is held in place by cylinder locking arms seated in cylinder slots

**CYLINDER INSTALLATION**

Install cylinder assembly into exterior trim by partially inserting the key 1/2 way into cylinder and rotating cylinder clockwise to screw in.



Insert key into locking screw and rotate clockwise to lock cylinder in place. Jiggle cylinder clockwise/ counterclockwise to be certain that cylinder locking arms are fully seated into cylinder slots.